



BIG TREE
FARMHOUSES

About Us

For a time, get away from the artificial environs of city life and breathe, relax, and enjoy an overnight stay at Big Tree Farmhouses in the fresh, lush green and natural environment. At *Big Tree Farmhouses*, you may experience nature as it is and introduce your children to natural living.

We aim to promote the concept of a unique farmhouse community wherein peace, privacy and pleasure would be guaranteed in a serene and peaceful ambiance. This project is designed to ensure that all of our customers enjoy convenience, comfort, and good value for money; we also take pleasure in our professionalism, dependability, and attention to detail.

Here are *some of the features* of our upcoming project:



Prime
Location



Forever
Farmhouse
Land



Survey
Land



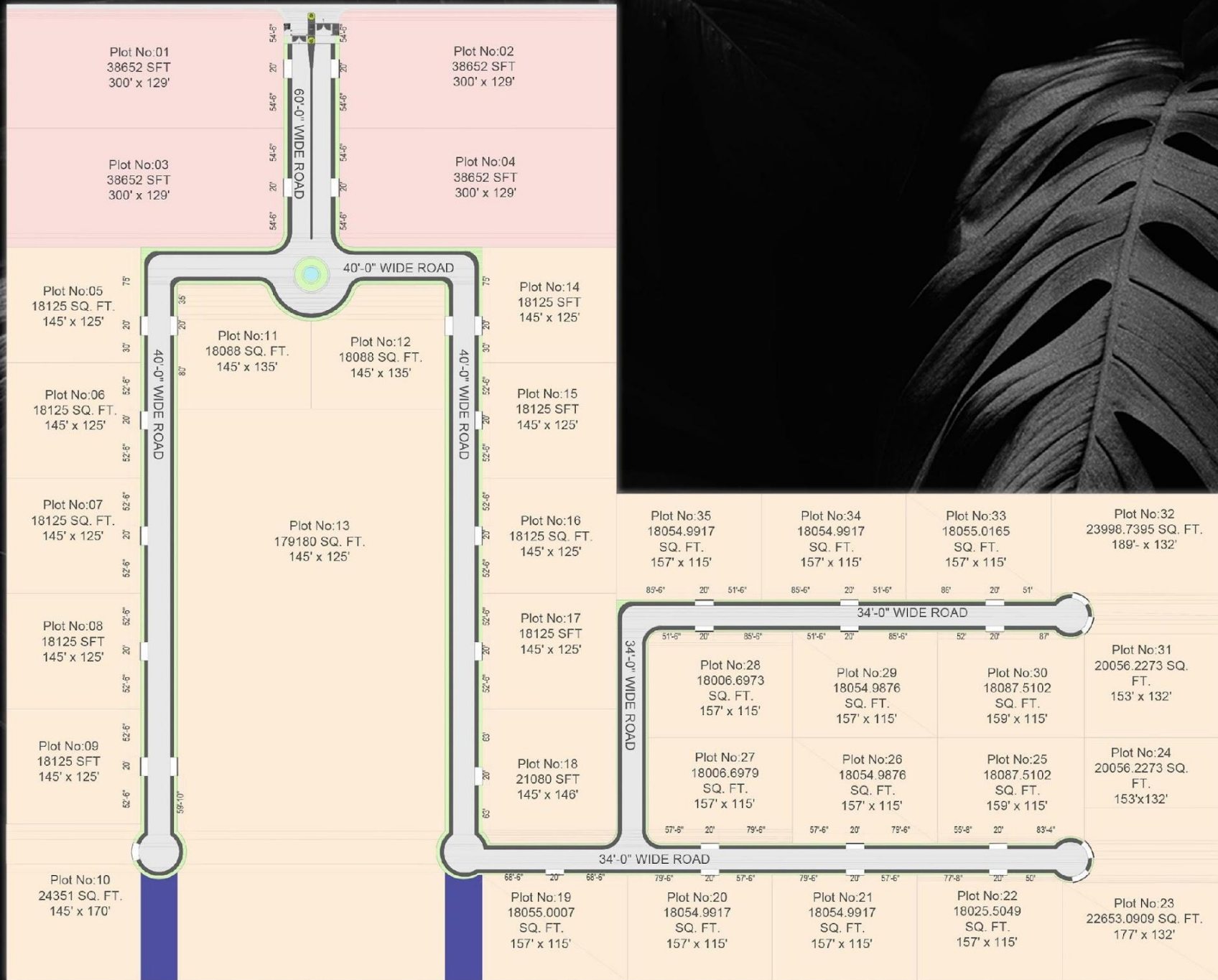
Gated
Boundary
Wall Society



Security
Guards



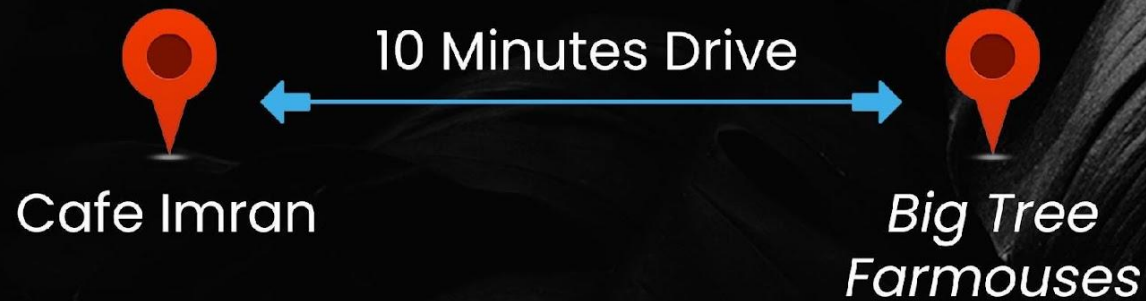
Maintenance
Facility



Location of Big Tree Farmhouses

Big Tree Farmhouses are located at a very ideal and well known farm location of the city. This project is situated in Gharo near to other well known.

It is a 10 minute drive from Café Imran.



Payment Plan

2000 Yards Plot

Total Price <small>(2000 Yards)</small>	PKR 75 Lakhs
Payment Time	4 Months
Per Month	25%







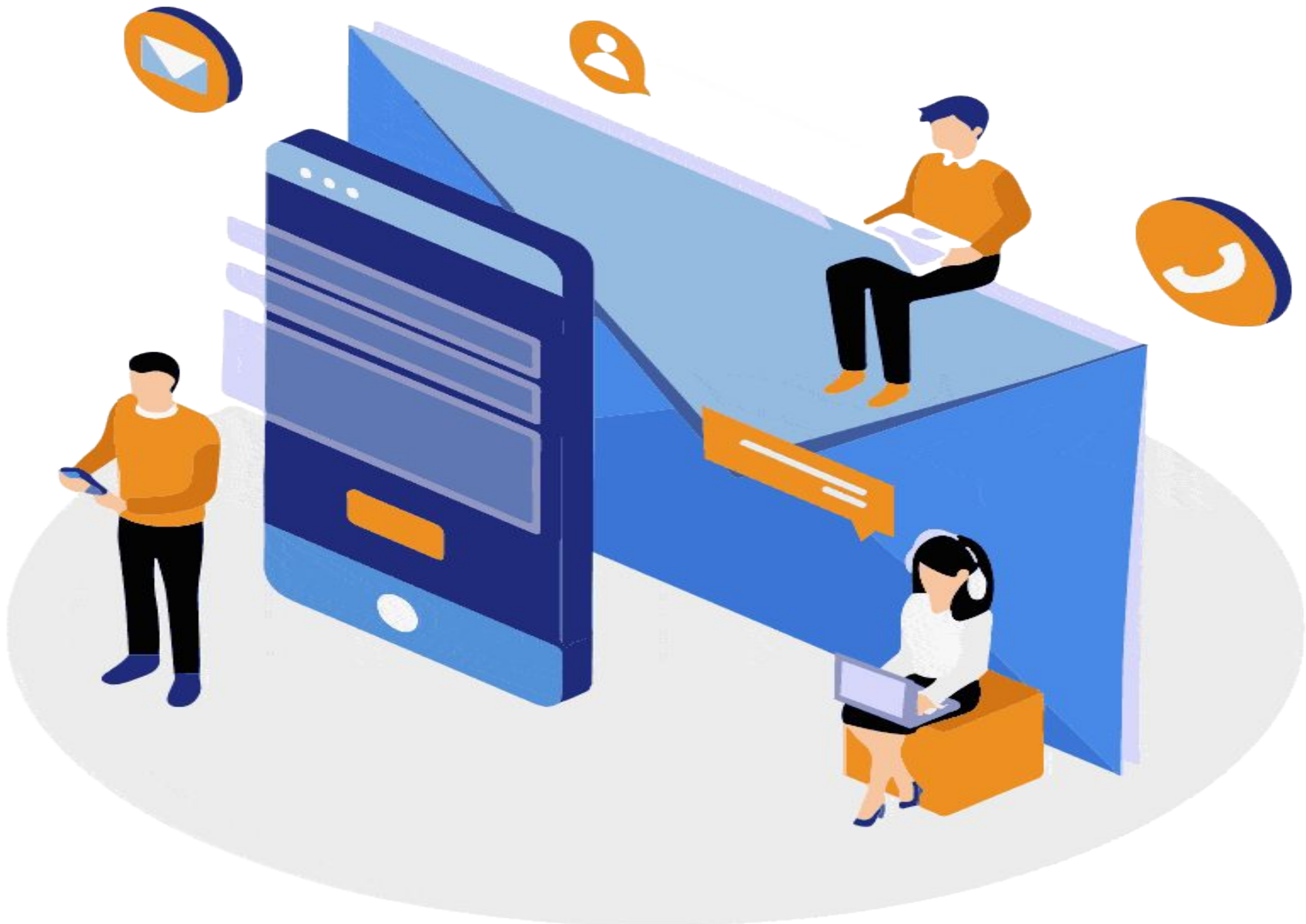












ae abad estate

All Builders & Developers Estate



EMAAR
Authorized Real Estate Consultant
Awarded to Abad Estate

Aziz Charania:
0333-2145611



+92 21 35657175
+92 21 35216715-16
+92 333 2145611



azizcharania4@gmail.com
www.abadestate.com



Suit # F-21, Columbus Towers, Mezzanine Floor,
Near 3 Swords, Main Clifton Road, Karachi-75600
Pakistan

A green rectangular sign with rounded corners and a white border, tilted upwards. The sign features the words "Thank You" in a white, bold, sans-serif font. The sign is supported by two silver poles. The background is a bright blue sky with a few wispy white clouds and a sun flare in the top right corner.

Thank You